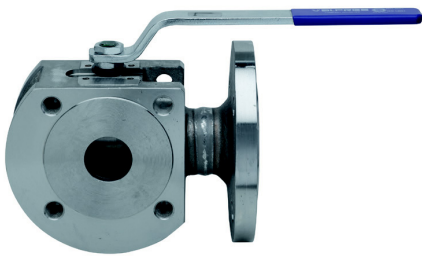
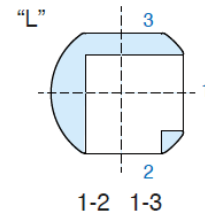
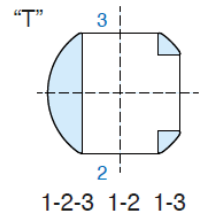
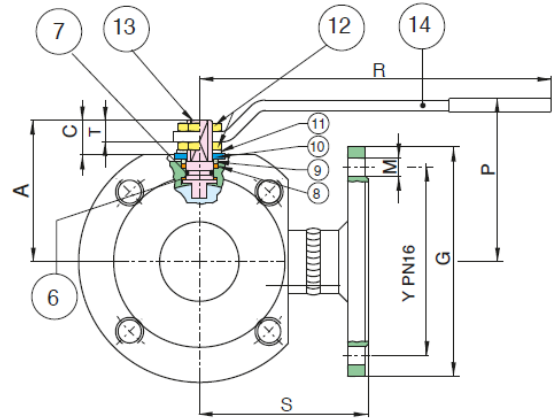
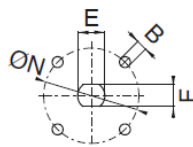
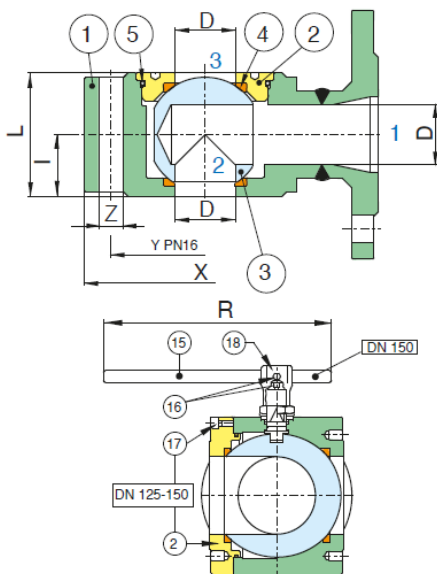


BV8-6666T-PN16 - T/L

Three way flanged diverter ball valve, "L" and "T" port, with two seats, reduced port.



- Temperature range: $-20^{\circ} +160^{\circ}$
- Vacuum: 10^3 torr.



NPS	DN	X	Y	Z	I	L	R	P	A	C	T	G	M	D	S	E	F	ØN	B	Kv(L)	PN	Kg
1/2"	15	89	65	4xM12	20	40	131,5	64,5	47	15,5	9	95	4xØ14	10	76	10	7	32	4xM5	2.8	16	2.23
3/4"	20	99	75	4xM12	20	40	131,5	67	49,5	13,5	9	105	4xØ14	15	82	10	7	32	4xM5	5.2	16	2.86
1"	25	109	85	4xM12	23	46	174,5	79	59	18	11	115	4xØ14	20	86	12	8	42	4xM5	9.2	16	3.89
1 1/4"	32	130	100	4xM16	29	58	250,5	84	64	15,5	11	140	4xØ18	25	105	12	8	42	4xM5	14.4	16	6.21
1 1/2"	40	140	110	4xM16	35,5	71	250,5	102,5	78	24,5	13	150	4xØ18	32	110	16	10	50	4xM6	25.9	16	8.50
2"	50	160	125	4xM16	41	82	321,5	109	85	25	13	165	4xØ18	40	120	16	10	50	4xM6	40.4	16	12.27
2 1/2"	65	180	145	4xM16	53	106	321,5	128	104,5	28	18	185	4xØ18	50,2	125	20	14	70	4xM8	63.2	16	19.10
3"	80	200	160	8xM16	61	122	381,5	136,5	113	28	18	200	8xØ18	64	150	20	14	70	4xM8	115.8	16	24.34
4"	100	220	180	8xM16	76	152	381,5	155,5	136	34,5	22	220	8xØ18	76	159	24	18	102	4xM10	163.2	16	38.45
5"	125	250	210	8xM16	98	196	381,5	178,5	159	34,5	22	250	8xØ18	100	190	24	18	102	4xM10	282.6	16	63.00
6"	150	306	240	8xM20	116	242	700	252	201	59	30	285	8xØ22	125	210	42	30	125	4xM12	441.6	16	108.00

N°	Part Name	Materials	Qty
1	BODY	A182-F316/F316L	1
2	END CONNECTION	A182-F316/F316L	1
3	BALL	A351-CF8M/A182-F316	1
4	BALL SEAT	P.T.F.E.	2
5	O-RING	FKM (VITON®)	1
6	THRUST WASHER	P.T.F.E.	1
7	O-RING	FKM (VITON®)	1
8	STEM SEAT	P.T.F.E.	1
9	PACKING GLAND	CARBON STEEL	1
10*	END STOP	"INOX AISI 430 DN 15- DN 5 CARBON STEEL DN 65- DN 100"	2 1
11	SPRING WASHER	CARBON STEEL	2
12	NUT	CARBON STEEL	2
13	STEM	A182-F316	1
14	HANDLE	CARBON STEEL	1
15	HANDLE DN 150	CARBON STEEL	1
16	SCREW	CARBON STEEL	1
17	SCREW	CARBON STEEL	8
18	BODY HANDLE DN150	EN-GJL 250	1

* Only version "L"